



# FOAM INSULATION, SEALANTS & ADHESIVES



STOPS AIR INFILTRATION



REDUCES ENERGY LOSS



SAVES MONEY

# ONE COMPONENT SEALANTS & ADHESIVES



Touch 'n Seal one-component polyurethane foam sealants are the most effective way to seal gaps and voids and prevent energy loss from air infiltration. Each product has been designed to meet the requirements of the most demanding air-sealing applications. Touch 'n Seal foams expand to completely fill and seal irregular spaces, without the need for backer rod or expensive caulks. Proprietary aerosol technology provides the professional user greater control and less waste. Each product meets code requirements as demonstrated by ICC-ES ESR-1926.\*

## Applications



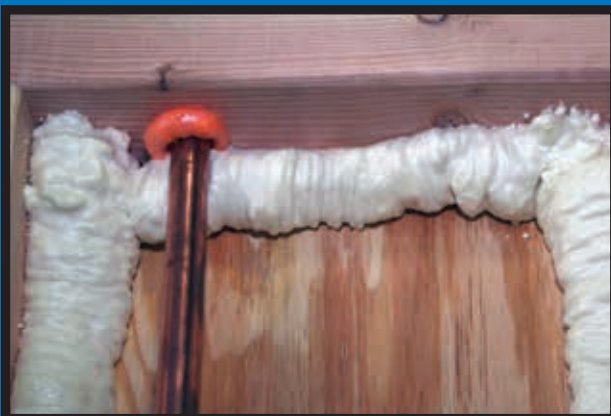
### Windows and Doors.

Touch 'n Seal No-Warp Window & Door Insulating Sealant expands without exerting pressure that could distort the frame. The cured rigid foam sealant maintains its shape to create a permanent, water-resistant air seal. All Seasons Polyurethane Foam Sealant can be used for window and doors when temperatures are as low as 20°F.



### Fire Blocking.

Touch 'n Seal Gun Foam II Polyurethane Foam Sealant has a distinctive orange color identifying it as a fire block sealant. All Seasons Sealant meets the fire blocking code requirements for Type V construction.



### Air Sealing.

Touch 'n Seal Quick-Cure Polyurethane Foam Sealant Cylinders and Straw Foam are especially suited for air sealing stud walls, band and rim joists, and attic floors prior to installing fiber insulation. Sealing only the perimeter of each stud bay lowers the infiltration rates to help meet the most stringent energy code requirements using fiber insulation.

\*Excluding Storm Bond.

# ONE-COMPONENT SEALANTS & ADHESIVES

## Gun Foam II

Air Sealing & Fire Block



- Type V residential fire block sealant
- Distinctive orange color
- ICC-ES ESR-1926 approved
- Class A fire resistance
- Item #4004528712



## All Seasons

Low Temperature Applications



- Suitable for use at temperatures as low as 20°F
- Type V residential fire block
- Low curing pressure – can be used to seal windows and doors
- ICC-ES ESR-1926 approved
- Class A fire resistance
- Item #4004529812



## No-Warp® Foam

Sealing Windows & Doors



- Low expansion and pressure during cure for sealing windows and doors (AAMA 812-04)
- ICC-ES ESR-1926 approved
- Class A fire resistance
- Item #4004529712



## Black Foam

Landscape and RV



- Black color for RV and landscaping applications
- Formulated to resist discoloration in exterior applications
- Class A fire resistance
- Item #4004529813



## Quick Cure Cylinders

High Volume Applications



- Convenient 10 lb and 16 lb sizes
- Available with 10 ft hose and applicator
- Residential fire block sealant
- ICC-ES ESR-1926 approved
- Class A fire resistance
- Reduced Expansion (RX)  
10 lb. Item #4004510950  
16 lb. Item #4004516900
- High Yield (HY)  
10 lb. Item #4004518100  
16 lb. Item #4004518160



## Quick Cure Straw Foam

Small Applications



- Applicator straw and adapter included
- Reusable foam saver nozzle
- ICC-ES ESR-1926 approved
- Class A fire resistance
- High Yield (HY)  
12 oz. Item #4004521212  
24 oz. Item #4004521224



# ONE-COMPONENT SEALANTS & ADHESIVES

## Subfloor

Construction Adhesive



- Reduces floor squeaks
- Conforms to ASTM D3498 – standard for adhesion to dry, wet, frozen lumber
- Conforms to ASTM C557 and D6464 – standard for drywall adhesion to wood studs
- Independent, 3rd-party certification from PFS
- Item #4005002740



## Poly-Clean

Polyurethane Foam Cleaner

- Cleans wet foam from tools and applicators
- Attaches directly to applicator basket to flush barrel
- Nozzle allows spray directly from can
- Item #4004712020



## Heavy Duty

Construction Adhesive



- Adheres to most common building materials
- Conforms to ASTM C557 and D6464 – standard for drywall adhesion to wood studs
- Independent, 3rd-party certification from PFS
- Item #4001160320



## FireStop/ FireStop 814

Foam/Latex Firestop System

- Use red FireStop Foam Sealant in combination with Firestop 814 latex sealant to meet common UL through-penetration firestop systems specifications
- Designed for use around pipes, conduits and other penetrations
- Polyurethane Foam Sealant Item #4004523712
- Intumescent Latex Firestop Sealant Item #4004523530



# GUN FOAM APPLICATORS

## Sharpshooter-X

Gun Foam Applicator

- Adjustable output for precision accuracy
- Coated non-stick basket
- Item #4004510608



## Sharpshooter-D

Gun Foam Applicator

- Adjustable output for precision accuracy
- Economical, disposable
- Individual Item #4004510600
- 6-Pack Item #4004510604



## Long Barrel Applicator

Gun Foam Applicator

- Adjustable output for precision accuracy
- Coated non-stick basket
- Available in 28" or 46" (total length)
- 28" Item #4004510028
- 46" Item #4004510639



# PROPERTIES\*



## ONE-COMPONENT

Product	Size	Yield** (linear ft., ¼" bead)	UL-723 Fire Resistance Rating			Tack-Free/Dry Time	Full Cure Time
			Rating	Flame Spread Index	Smoke Developed		
<b>Polyurethane Foam Sealants</b>							
Gun Foam II	24 oz.	3,200	Class A	15	25	10 min.	1 hr.
All Seasons	24 oz.	2,200	Class A	10	15	10 min.	1 hr.
Black Foam	24 oz.	3,200	Class A	15	25	10 min.	1 hr.
No-Warp Foam	20 oz.	2,200	Class A	10	15	12 min.	1 hr.
Quick Cure High Yield (HY) Straw Foam	12 oz.	900	Class A	10	15	<30 min.	24 hrs.
	24 oz.	1,900				<30 min.	24 hrs.
Quick Cure High Yield (HY) Cylinder	10 lb.	15,000	Class A	20	25	<15 min.	24 hrs.
	16 lb.	24,000				<15 min.	24 hrs.
Quick Cure Reduced Expansion (RX) Cylinder	10 lb.	15,000	Class A	20	25	<15 min.	24 hrs.
	16 lb.	24,000				<15 min.	24 hrs.
<b>Specialty Products</b>							
FireStop Foam Sealant	16 oz.	2000	Class A	5	0	10 min.	1 hr.
FireStop 814 Intumescent Latex Sealant	10.1 oz.	—	—	—	—	15 min.	2 - 3 weeks
Ignition Barrier Intumescent Latex Coating	5 gal.	200 ft <sup>2</sup> /gal @ 5 mil dry thickness	—	—	—	75 min.	24 hrs.

\* These are approximate typical properties and do not represent product specifications.

\*\* All Touch 'n Seal yields are calculated according to ASTM C1536. Theoretical yield is used as an industry standard to represent the size of one-component and two-component foam kits. The calculation is based on ideal conditions, does not include blowing agent loss, and may vary according to application method or environmental factors.

## ADHESIVES\*\*\*

Product	Size	Yield** (linear ft., ½" bead)	Open Time	Fully Cured	ASTM D3498				ASTM D6464			
					Shear Strength (Dry, Wet, Frozen)	Moisture Resistance	Oxidation Resistance	Gap	Shear Strength, 24 hours	Tensile Strength, 24 hours	Aging	Gap
Subfloor Adhesive	24 oz.	480	20 min.	4 hours	798, 362, 597 psi	569 psi	414 psi	Pass	95 psi	45 psi	Pass	Pass

Product	Size	Yield** (linear ft., ½" bead)	Open Time	Fully Cured	ASTM C557				ASTM D6464			
					Shear Strength, 24 hours	Tensile Strength, 14 days	Aging	Gap	Shear Strength, 24 hours	Tensile Strength, 24 hours	Aging	Gap
Heavy Duty Adhesive	24 oz.	480	20 min.	4 hours	91 psi	36 psi	Pass	Pass	95 psi	45 psi	Pass	Pass

\*\*\* Refer to Technical Data Sheet for complete list of typical properties.



# TWO-COMPONENT SPRAY FOAM INSULATION



Touch 'n Seal Foam Kits are two-component low-pressure spray-applied or pour-in-place polyurethane foam systems for insulating residential, commercial, industrial, agricultural structures. They are supplied from disposable cylinders, the Touch 'n Seal CPDS Series 2, or refillable cylinders. The components are mixed and applied with the patented applicator to produce rapidly curing rigid polyurethane foam for insulation, air-sealing and other uses.

## Applications



### Attic Insulation.

Applying up to 2 inches of Touch 'n Seal Two Component Spray Polyurethane Foam Insulation on attic floors prior to installing blown-in or batt insulation adds up to R-12 of additional thermal protection. Unlike fiber insulation alone, Touch 'n Seal Spray Polyurethane Foam Insulation greatly reduces radiant heat loss or gain from the attic, which can account for a large portion of energy loss.



### Duct Sealing.

Sealing joints or fully insulating rigid metal HVAC ducts with Touch 'n Seal Two Component Spray Polyurethane Foam Insulation in un-conditioned attics and crawl spaces will reduce energy loss, provide greater comfort, and increase the efficiency of the HVAC system. Insulating exhaust fan ducts can help prevent condensation and dripping back through the fan assembly.



### Basement Insulation.

Basement walls in cold climates are a large source of heat loss. Touch 'n Seal Two Component Spray Polyurethane Foam Insulation provides a continuous layer of insulation that performs as a moisture vapor barrier, keeping the basement warm and dry. The foam insulation must then be covered by a gypsum board wall or other approved thermal barrier.

# TWO-COMPONENT SPRAY FOAM INSULATION

- Ready-to-use – no shaking or mixing required
- Comply with IRC, IBC requirements for foamed plastic insulation
- Low odor formulations
- 15 month shelf life for 1.75 PCF formulas
- Maximum insulation performance (R-value)

<b>Yield</b>	<b>Description</b>
	<b>Item #</b>
	<b>Density</b>



## Foam Kit FR Standard 1.75 PCF

Closed Cell

- ASTM E-84 Class A Fire Resistance
- Can be used in a broad range of construction, industrial, and OEM applications

<b>15F</b> Fire Retardant 4004520015 1.75 PCF	<b>110F</b> Standard Formula 4004520110 1.75 PCF	<b>200F</b> Standard Formula 4004520200 1.75 PCF	<b>600F</b> Standard Formula 4004520600 1.75 PCF
---	--	--	--

## Foam Kit FR ICC 1.75 PCF

Closed Cell

- ICC Evaluation Services ESR-3052
- Offers code officials, inspectors, architects, contractors evidence of code compliance



## Foam Kit FR Slow Rise 1.75 PCF

Closed Cell

- Slow cure, low foaming pressure pour-in-place formulation
- ASTM E-84 Class A Fire Resistance
- Meets requirements of Title 33 CFR §183.144 for flotation material

<b>200F</b> Slow Rise 4004520220 1.75 PCF	<b>600F</b> Slow Rise 4004520620 1.75 PCF
---	---

## Foam Kit FR Standard 1.0 PCF

Open Cell

- Can be used to repair low density SPF
- Reduces sound transmission, creating quiet spaces
- ASTM E-84 Class A Fire Resistance

<b>300</b> Standard Formula 4004520300 1.0 PCF	<b>1000</b> Standard Formula 4004521000 1.0 PCF
--	---

## Foam Kit FR Standard 3.0 PCF

Closed Cell

- High compressive strength and dimensional stability for hail resistance
- For use in repairing spray foam roofs
- High R-value

<b>120</b> Standard Formula 4004523120 3.0 PCF
--

## Ignition Barrier Coating

Applied Over Polyurethane Foam

- Intumescent water-based latex coating
- Developed to meet building code requirements for alternative ignition barriers
- Complies with ICC-ES AC377 Appendix X (modified NPFA 286 test)
- 5-gallon pail; Item #4004523900



# TWO-COMPONENT SPRAY FOAM PRODUCTS

## Disposable Foam Kits

- Complete kits are ready-to-use – contain everything needed
- Portable
- Easy to carry using Rip 'n Go handle



	FR Standard 1.75 PCF	FR ICC 1.75 PCF	Slow Rise FR 1.75 PCF	FR Standard 1.0 PCF	FR Standard 3.0 PCF
Foam Kit 15	4004520015	–	–	–	–
Foam Kit 110	4004520110	–	–	–	–
Foam Kit 120	–	–	–	–	4004523120
Foam Kit 200	4004520200	4004001200	4004520220	–	–
Foam Kit 600	4004520600	4004521600	4004520620	–	–
Foam Kit 300	–	–	–	4004520300	–
Foam Kit 1000	–	–	–	4004521000	–

## Refill Systems

- Best for large volume OEM operations
- Low investment, returnable cylinders
- 1.75 PCF Refills in Standard, ICC, and Slow Rise, available in 3 sizes:
  - ✓ RF-17: 2,000 bd. ft
  - ✓ RF-60: 6,800 bd. ft.
  - ✓ RF-120: 15,400 bd. ft.



	FR Standard 1.75 PCF	FR ICC 1.75 PCF	Slow Rise FR 1.75 PCF
RF-17	4505100000	4505110000	4505120000
RF-60	4505160000	4505166000	4505161000
Rf-120	4505112000	4505113000	4505114000

## Replacement Nozzles

Conical Nozzle

- 25 pack bag
- For smaller area / more precise application coverage
- Item #4004529940



## Replacement Nozzles

Fan Nozzle

- 25 pack bag
- For wider area coverage
- Item #4004529940





# CONSTANT PRESSURE DISPENSING SYSTEM



## Affordable System for High Volume



Item # 4505500150

- Ideal for mid-sized projects such as room additions, attics, rim joists, and crawl spaces
- Offers the convenience of Foam Kits with higher output and efficiency
- Application rate is adjustable and consistent
- Can be used with hoses up to 100 ft. long
- Self-contained system does not require any additional equipment
- Disposable cylinders are easy to handle and change



### Included in the system:

- 30' hose; foam applicator; on/off valves – fully assembled
- Poly-Clean (1 can)
- Conical Nozzles (25 pack)
- Fan Nozzles (25 pack)
- Extra Foam Applicator with 12' Hose
- Protective Cover
- Forced Air Heating Unit
- Pressure Supply Hoses (2)
- Wrenches – 9/16" & Adjustable
- Operation Manual & Instructional DVD

Watch the  
CPDS in  
action!



	FR ICC 1.75 PCF	Slow Rise FR 1.75 PCF	FR Standard 1.0 PCF
Foam Kit CP-750	4505500750	4505501750	–
Foam Kit CP-1200	–	–	4505501200

# PROPERTIES\*

## TWO-COMPONENT

(Typical Values)	OPEN CELL	CLOSED CELL			
Formula Description	1.0 PCF	1.75 PCF ICC	1.75 PCF Standard	1.75 PCF Slow Rise	3.0 PCF
Shelf Life (unopened container)	12 months	15 months	15 months	15 months	15 months
Dry / Tack-Free	45 seconds	45 seconds	45 seconds	75 seconds	45 seconds
Cutable	5 minutes	5 minutes	5 minutes	10 minutes	5 minutes
Cure Time	Approx. 1 hour	Approx. 1 hour	Approx. 1 hour	Approx. 1 hour	Approx. 1 hour
Fungi Resistance – ASTM G21	Does not support growth	Does not support growth	Does not support growth	Does not support growth	Does not support growth
Surface Burning Characteristics – ASTM E84: Flame Spread Smoke Developed	@ 2" thick (51mm): 10 250	@ 2" thick (51mm): 15 350	@ 2" thick (51mm): 25 350	@ 2" thick (51mm): 20 350	N/A N/A
Water Vapor Transmission – ASTM E96	5.4 perms @ 1" (25mm)	1.77 perms @ 1" 0.98 perms @ 2"	—	—	—
Air Leakage @ 1" Thickness – ASTM E283 (@ 1.57 psf (75 Pa))	0.003 CFM/ft <sup>2</sup> (0.015 L/s m <sup>2</sup> )	0.0004 CFM/ft <sup>2</sup> (0.002 L/s m <sup>2</sup> )	< 0.004 CFM (< 0.02 L/s m <sup>2</sup> )	—	—
R-Value per inch (Aged)** – ASTM C518	4.1	5.4	5.5	5.2	5.9
Compressive Strength – ASTM D1621	—	31 psi (214 kPa)	—	15 psi (105 kPa)	40 psi (2.81 kg/cm <sup>2</sup> ) (276 kPa)
Tensile Strength – ASTM 1623	—	31 psi (213 kPa)	20 psi (138 kPa)	—	—
Thermal & Humid Aging @ 2wks - Dimensional Stability – ASTM D2126	—	+176°F (+80°C): 1.6% +158°F (+70°C), 97% RH: 5.7% -4°F (-20°C): 0.9% <sup>†</sup>	—	—	—
Water Absorption – ASTM D2842	—	—	—	1.5%	—
Closed Cell Content – ASTM D6226	< 10%	94%	> 90%	93%	85%
International Residential Code / International Building Code	Compliant	Compliant	Compliant	Compliant	Compliant
Low-emitting Material***	—	Certified	Certified	Certified	Certified
California Bureau of Home Furnishings & Insulation	Listed	Listed	Listed	—	—
Sound Transmission Class – ASTM E90	33 @ 1.5" (38mm)	32 @ 1.5" (38mm)	—	—	—
Noise Reduction Coefficient – ASTM C423	0.35	—	—	—	—
ICC Report	—	ESR-3052	—	—	—

\* These are approximate typical values and do not represent product specifications.

\*\* The higher the R-value the greater the insulating power. Ask your seller for the fact sheet on R-values.

\*\*\* CA Spec 01350 for School Classrooms and Private Offices. Berkeley Analytical VOC Emissions Testing Certificate 140514.02.

# CONVENIENCE PRODUCTS



## It's about you, our customers.

"What I really appreciate about doing business with Convenience Products is I always know that they will always be able to get me the products I need when and where I need them."

— *National building products distributor*

"I wish all the companies I deal with had people that were as knowledgeable and dedicated."

— *Weatherization contractor from New England*

"Whether I am calling to order, ask questions or get help with a problem, they follow through and make sure I am taken care of."

— *Custom builder from Ohio*

We didn't say it, they did. But it is what we are about. We are driven by the mission of profitable growth, but we realize that to do this, we have to get a lot of things right – starting with servicing our customers well.

To order or for product information, please call our Customer Service Department at (800) 325-6180, then press "1".

[www.touch-n-seal.com](http://www.touch-n-seal.com) contains a lot of helpful information about our products and how to use them, so be sure to check it out.



**Convenience  
products**

866 Horan Drive  
Fenton, MO 63026  
800.325.6180  
[www.touch-n-seal.com](http://www.touch-n-seal.com)



**MADE IN U.S.A.**



# Product Listing

Item #	Description	Case Qty	Pallet Qty
<b>ONE-COMPONENT FOAM SEALANTS</b>			
4004529812	All Seasons, 24 oz.	12	72
4004528712	Gun Foam II, 24 oz.	12	72
4004529712	No-Warp® Foam, 20 oz.	12	72
4004529813	Black Foam, 24 oz.	12	72
4004521212	Quick Cure HY Straw Foam, 12 oz.	12	108
4004521224	Quick Cure HY Straw Foam, 24 oz.	12	72
4004518100	Quick Cure HY Cylinder, 10 lb	1	90
4004518160	Quick Cure HY Cylinder, 16 lb	1	50
4004510950	Quick Cure RX Cylinder, 10 lb	1	90
4004516900	Quick Cure RX Cylinder, 16 lb	1	50
<b>ONE-COMPONENT APPLICATORS AND ACCESSORIES</b>			
4004510600	Sharpshooter-D Applicator	1	-
4004510604	Sharpshooter-D Applicator, Six Pack	6	-
4004510608	Sharpshooter-X Applicator	1	-
4004510629	One Component Bottom Load Applicator	1	-
4004510028	28" Long Barrel Applicator	1	-
4004510639	46" Long Barrel Applicator	1	-
4004529952	Brass Tip Extension	1	-
4001593315	10 ft. Wand Applicator, Hose (Cylinder)	1	-
4004712000	Poly-Clean Foam Cleaner, 12 oz.	12	108
<b>ONE-COMPONENT ADHESIVES</b>			
4006002470	Subfloor, 24 oz.	1	6
4001160320	Heavy Duty, 24 oz.	1	6
<b>TWO-COMPONENT FOAM KITS</b>			
4004520015	Foam Kit 15 FR Standard 1.75 PCF	12	24
4004520110	Foam Kit 110 FR Standard 1.75 PCF	1	36
4004520200	Foam Kit 200 FR Standard 1.75 PCF	1	36
4004520600	Foam Kit 600 FR Standard 1.75 PCF	1	32
4004520601	Foam Kit 600 FR Standard 1.75 PCF, Replacement	1	32
4004001200	Foam Kit 200 FR ICC 1.75 PCF	1	36
4004521600	Foam Kit 600 FR ICC 1.75 PCF	1	32
4004521601	Foam Kit 600 FR ICC 1.75 PCF, Replacement	1	32
4004520220	Foam Kit 200 Slow Rise FR 1.75 PCF	1	36
4004520620	Foam Kit 600 Slow Rise FR 1.75 PCF	1	32
4004520300	Foam Kit 300 FR Standard 1.0 PCF	1	36
4004521000	Foam Kit 1000 FR Standard 1.0 PCF	1	32

Item #	Description	Case Qty	Pallet Qty
<b>TWO-COMPONENT CPDS FOAM KITS</b>			
4505500750	CP-750 FR ICC 1.75 PCF	1	18
4505501750	CP-750 Slow Rise FR 1.75 PCF	1	18
4505501200	CP-1200 FR Standard 1.0 PCF	1	18
<b>TWO-COMPONENT REFILL FOAM KITS</b>			
4505100000	RF-17 FR Standard 1.75 PCF	1	1
4505160000	RF-60 FR Standard 1.75 PCF	1	1
4505112000	RF-120 FR Standard 1.75 PCF	1	1
4505110000	RF-17 FR ICC 1.75 PCF	1	1
4505166000	RF-60 FR ICC 1.75 PCF	1	1
4505113000	RF-120 FR ICC 1.75 PCF	1	1
4505120000	RF-17 Slow Rise 1.75 PCF	1	1
4505161000	RF-60 Slow Rise 1.75 PCF	1	1
4505114000	RF-120 Slow Rise 1.75 PCF	1	1
<b>SPECIALTY PRODUCTS</b>			
4004523900	Ignition Barrier Coating, 5 gal.	1	36
4004523530	FireStop 814 Caulk, 10.1 oz.	12	108
4004523712	FireStop Foam Sealant, 16 oz.	12	90
<b>TWO-COMPONENT APPLICATORS AND ACCESSORIES</b>			
4505500150	CPDS Series 2	1	-
4505100012	Applicator Kit, 12" hose-out (Refill / CPDS)	1	-
4505100045	30 ft. Hose Set (Refill / CPDS)	1	-
4505101100	100 ft. Hose Set (Refill / CPDS)	1	-
4505500170	Inline Filter Assembly	1	-
4505100035	60 ft. Hose Assembly with WHITE Applicator (Refill)	1	-
4004590327	15 ft. YELLOW Applicator w/Std Accessory Pack	1	-
4004590337	30 ft. YELLOW Applicator w/Std Accessory Pack	1	-
4004590325	15 ft. WHITE Applicator w/Std Accessory Pack (P2)	1	-
4004590335	30 ft. WHITE Applicator w/Std Accessory Pack (P2)	1	-
4004529930	Nozzle Pack, Clear – Conical	25	-
4004529940	Nozzle Pack, Yellow – Fan	25	-
4004529968	Nozzle Pack, Black – Injection	25	-
4505100080	Nozzle Pack, Calibration (Refill)	25	-



www.touch-n-seal.com  
800.325.6180



Convenience  
products



52095-032515-TNS